



Primary Care Cancer Education

The Hub Plus Derbyshire and Hereford & Worcestershire Training Hub have teamed with Gateway C to highlight some of the fantastic training and development opportunities available.

In partnership with the East and West Midlands Cancer Alliances, here's a list of courses you can enrol on...

Care Coordinator

[Cervical Screening](#)

[Breast Screening](#)

[Bowel Screening](#)

[Supporting Your Patients](#)

[Managing Physical Effects](#)





Primary Care Cancer Education

The Hub Plus Derbyshire and Hereford & Worcestershire Training Hub have teamed with Gateway C to highlight some of the fantastic training and development opportunities available.

In partnership with the East and West Midlands Cancer Alliances, here's a list of courses you can enrol on...

Health and Wellbeing Coach

<u>Cervical Screening</u>	<u>Breast Screening</u>	<u>Supporting Your Patients</u>	<u>Bowel Screening</u>
	<u>Breast Cancer Recurrence</u>	<u>Managing Physical Effects</u>	





Primary Care Cancer Education

The Hub Plus Derbyshire and Hereford & Worcestershire Training Hub have teamed with Gateway C to highlight some of the fantastic training and development opportunities available.

In partnership with the East and West Midlands Cancer Alliances, here's a list of courses you can enrol on...

Healthcare Support Worker

<u>Cervical Screening</u>	<u>Breast Screening</u>	<u>Bowel Screening</u>	<u>Acute Leukaemia</u>
<u>Supporting Your Patients</u>	<u>Skin Cancer</u>	<u>Chronic Leukaemia</u>	<u>Managing Physical Effects</u>





Primary Care Cancer Education

The Hub Plus Derbyshire and Hereford & Worcestershire Training Hub have teamed with Gateway C to highlight some of the fantastic training and development opportunities available.

In partnership with the East and West Midlands Cancer Alliances, here's a list of courses you can enrol on...

IAPT Staff

[Cervical Screening](#)

[Breast Screening](#)

[Supporting Your Patients](#)

[Bowel Screening](#)

[Managing Physical Effects](#)



Primary Care Cancer Education

The Hub Plus Derbyshire and Hereford & Worcestershire Training Hub have teamed with Gateway C to highlight some of the fantastic training and development opportunities available.

In partnership with the East and West Midlands Cancer Alliances, here's a list of courses you can enrol on...

Manager

<u>Cervical Screening</u>	<u>Breast Screening</u>	<u>Supporting Your Patients</u>	<u>Bowel Screening</u>
<u>Cervical Cancer</u>	<u>Non-specific symptoms</u>	<u>Faecal Immunochemical Test</u>	





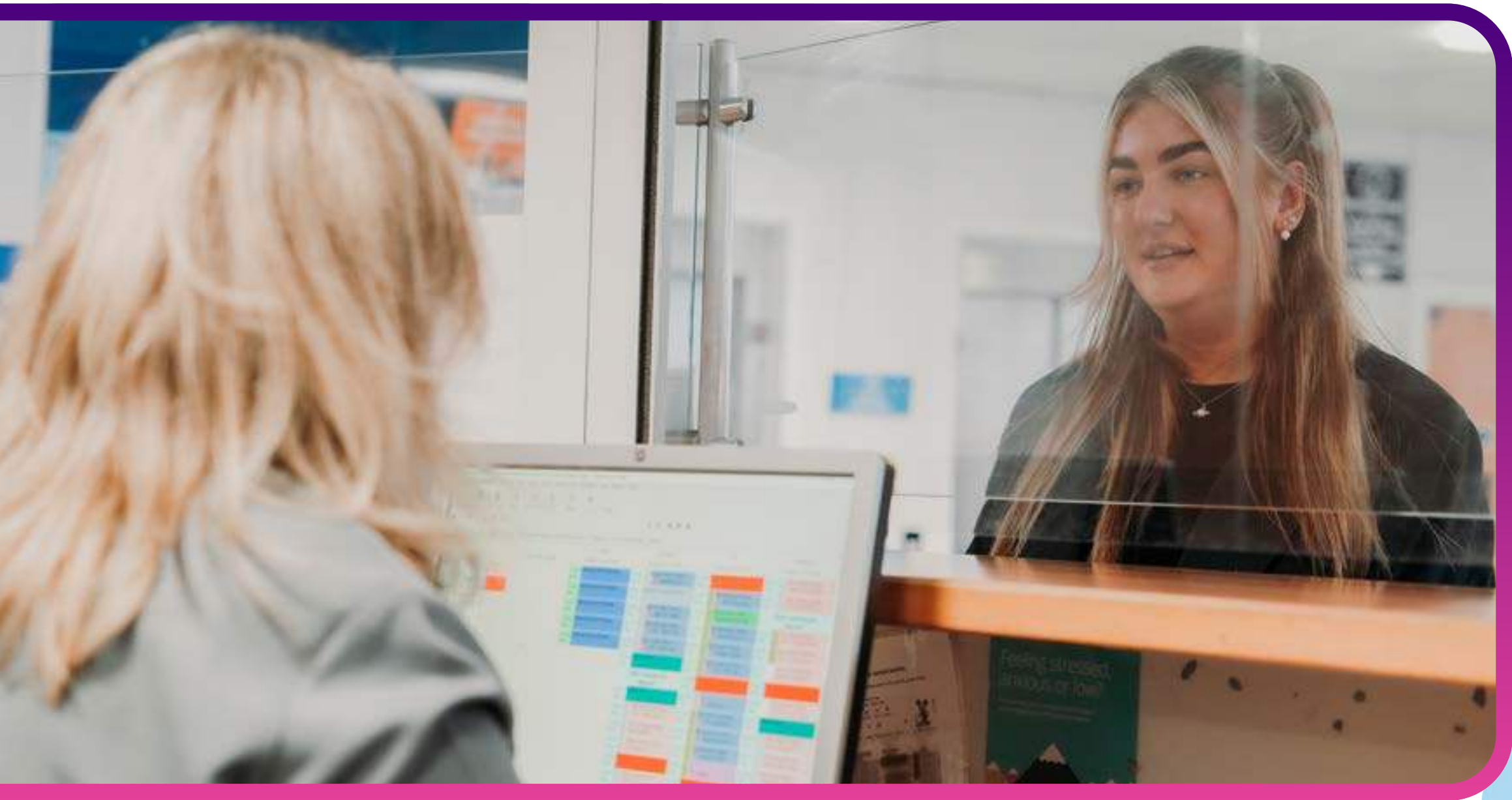
Primary Care Cancer Education

The Hub Plus Derbyshire and Hereford & Worcestershire Training Hub have teamed with Gateway C to highlight some of the fantastic training and development opportunities available.

In partnership with the East and West Midlands Cancer Alliances, here's a list of courses you can enrol on...

Receptionist / Admin / Secretary

<u>Cervical Screening</u>	<u>Breast Screening</u>	<u>Bowel Screening</u>	<u>Faecal Immunochemical Test</u>
<u>Supporting Your Patients</u>		<u>Managing Physical Effects</u>	





Primary Care Cancer Education

The Hub Plus Derbyshire and Hereford & Worcestershire Training Hub have teamed with Gateway C to highlight some of the fantastic training and development opportunities available.

In partnership with the East and West Midlands Cancer Alliances, here's a list of courses you can enrol on...

Social Prescribing Link Worker

[Cervical Screening](#)

[Breast Screening](#)

[Bowel Screening](#)

[Managing Physical Effects](#)

[Supporting Your Patients](#)





Primary Care Cancer Education

The Hub Plus Derbyshire and Hereford & Worcestershire Training Hub have teamed with Gateway C to highlight some of the fantastic training and development opportunities available.

In partnership with the East and West Midlands Cancer Alliances, here's a list of courses you can enrol on...

Occupational Therapist

<u>Cervical Screening</u>	<u>Breast Screening</u>	<u>Bowel Screening</u>	<u>Managing Physical Effects</u>
<u>Sarcoma</u>	<u>Supporting Your Patients</u>	<u>Breast Cancer Recurrence</u>	

